



Free Space Faraday Broad Band Isolator

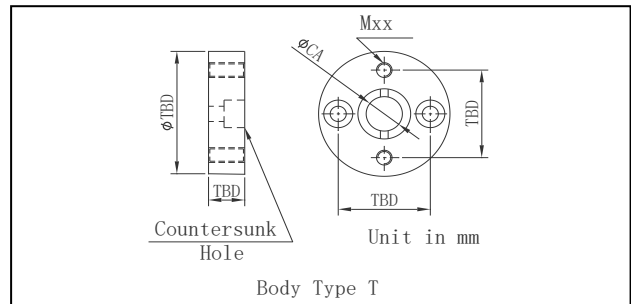
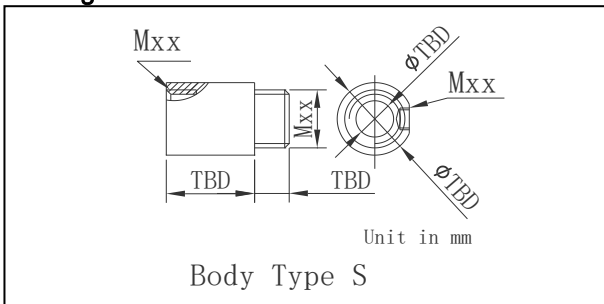
I&Optics' free space Faraday Isolator can transmit the forward light with high transmission ratio and dissipate the reversed light due to the nonreciprocal Faraday effect. It features very high transmission ratio, large clear aperture, high isolation and very low light deviation. It can be used in lasers, sensors, demonstration, testing systems and R&D.

Specification

Parameter	Test Condition	Unit	Value	
Isolator Type	-	-	Broad Band	
Polarization Property	-	-	Insensitive	Sensitive
Nominal Center Wavelength	-	nm	1030, 1064 or Specify	
Wavelength Range	-	nm	+/-40	
Min. Transmission Ratio	at Center Wavelength	%	95, Typ. 97	90, Typ. 93
Min. Isolation	at 23°C	dB	26, Typ. 32	
Min. Extinction Ratio	at Center Wavelength	dB	20, Typ. 22	25, Typ. 30
Polarization Dependent Loss	at Center Wavelength	dB	Max. 0.2, Typ. 0.1	Min. 25, Typ. 30
Max. Beam Deviation Angle	-	mrad	5	
Max. M ² Degradation	-	%	10.0	
Min. Clear Aperture	-	mm	Dia. 1.0, 1.2, 1.5 or Specify	Dia. 2.0, 2.8, 4.8 or Specify
Max. Power Handling Rate	Continuous Wave	W	0.3, 1, 5, 10, 20, 50 or Specify	
Operating Temperature	-	°C	-5 to 50	
Storage Temperature	-	°C	-40 to 85	

Above specifications are for device without protecting windows for pollution and escape windows for reversed light. Both windows are available upon request.

Package Dimensions



Dimensions depends on user's application and actual requirements. We are very pleased to do our best to provide customized package for optimizing. Detailed informations please contact us.

Ordering Informations

FSBI-①-②-③-④-⑤

- | | | | |
|-----------------------|----------------|--------------------------------|--------------------|
| ① - Center Wavelength | ③ - Power Rate | ④ - Interface Type on I/O Port | ⑤ - Clear Aperture |
| 03 - 1030nm | 0T - 0.3W | 5 - M5 for Type S | 09 - 0.9mm |
| 06 - 1064nm | 01 - 1W | 9 - M9 for Type S | 12 - 1.2mm |
| SS - Specify | 05 - 5W | 13 - M13 for Type S | 15 - 1.5mm |
| | 10 - 10W | 20 - M20 for Type S | 20 - 2.0mm |
| ② - Polarization Type | 20 - 20W | 32 - M32 for Type S | 28 - 2.8mm |
| I - Insensitive | 50 - 50W | N - Pacakge for Type P | 48 - 4.8mm |
| S - Sensitive | | | |